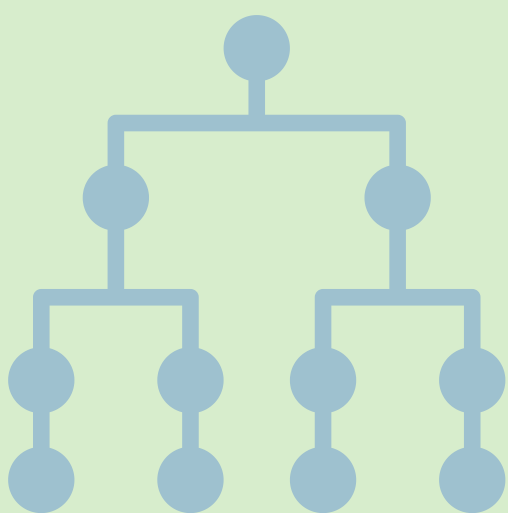


State Government

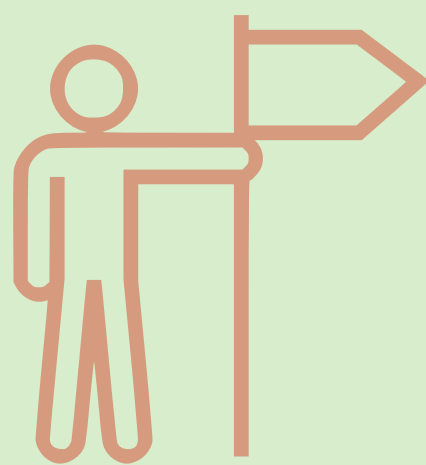


Structure

The state government is made up of two houses. The legislative council is the upper house, and the legislative assembly is the lower house.

Premier

The premier is the chief minister. They are the spokesperson for the state government and often communicate with media. It is their job to choose ministers, allocate their portfolios and oversee their work.



Legislative Assembly

The legislative assembly is comprised of members representing electorate areas. After voting occurs, the party with the majority in the legislative assembly forms the government. The minority party becomes the opposition. Senior members may become ministers who are in charge of different portfolios or policy areas.



Legislative Council

The legislative council is sometimes called 'The house of review'. Their role is to scrutinise legislation and hold the government accountable. The council members are elected in a state ballot.

