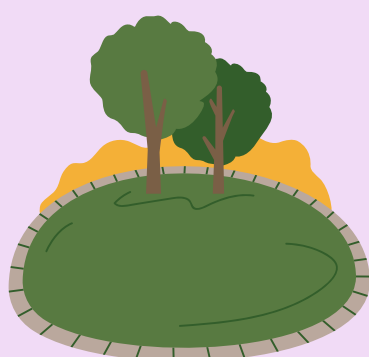


Local Government

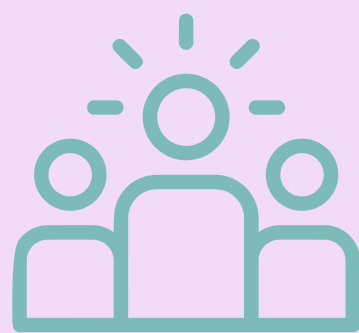


LGAs

Local governments are formed based on local government areas (LGAs). LGAs range in size and may be made up of suburbs, towns or rural areas.

Mayor

The mayor is the voice of the council and is seen to be the leader of the community. Usually councillors elect a mayor from amongst themselves, however in some LGAs, voters choose the mayor. If elected by councillors, the mayor serves for 2 years. If elected by voters, they serve for 4 years.



Councillors

Councillors represent their communities by making decisions that affect their community and local businesses. They are similar to a board of directors in an organisation as they are the governing body of the council. Councillors are elected for a period of four years.

Wards

LGAs may be divided into different wards. Electors in each ward can vote for councillors to represent their ward.

For example Cumberland Council represents 29 suburbs and is broken into 5 wards. Within Western Sydney, the only two LGAs without wards are Campbelltown and Hawkesbury

