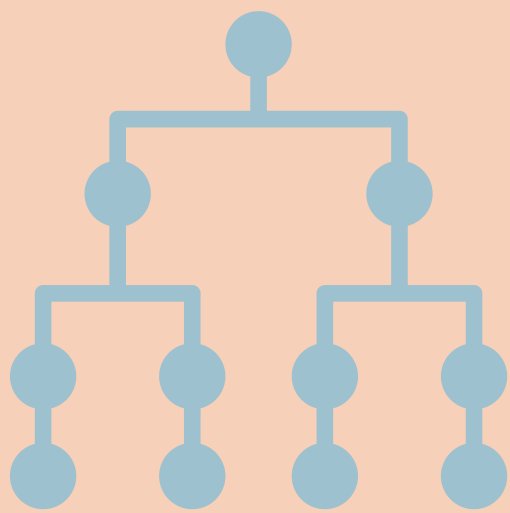


# Federal Government



## Structure

The federal government or parliament is made up of two houses, The House of Representatives and The Senate. They implement and make changes to the law, hold the state and local governments accountable and represent the Australian people.

## The House of Representatives

The House of Representatives is made up of 151 members who represent elective areas across Australia. Members are spokespeople for their area. The composition of the house is determined by which party is the majority government. The largest party or parties who do not have the majority form the opposition.



## The Senate

The Senate is made up of 76 members who are elected based on the representation found in the House of Representatives. This makes it easier for minor parties to be elected. The Senate is the 'House of Review,' as it debates and scrutinises laws and government policy.



## The King and the Governor-General

The King is the head of state and is represented by the Governor-General. The Governor-General remains impartial and carries a constitutional, ceremonial and civic role. This involves being the Commander-in-Chief of the Australian Defence Force, commissioning the Prime Minister, presiding over the Executive Council, attending a range of events and presenting awards and approving bills before they become laws.



## Prime Minister

The Prime Minister is the head of the Australian government. They are elected by the party that has majority or is 'in government.'

